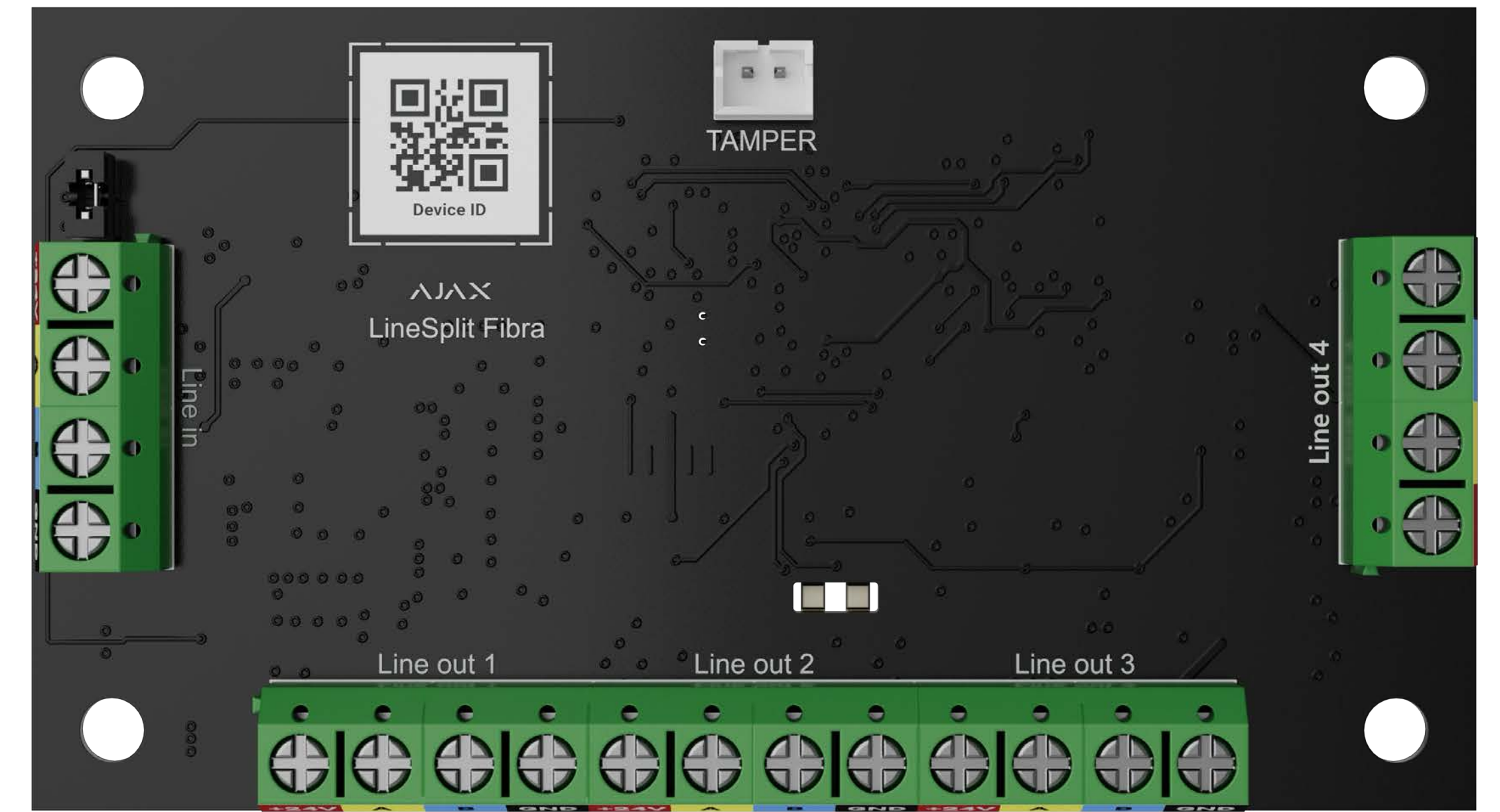
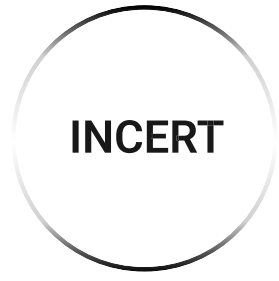
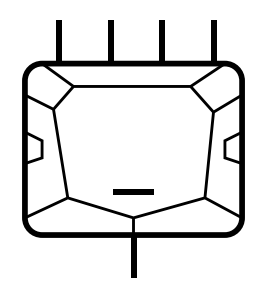


Superior LineSplit Fibra

Module to split one Fibra line into four.

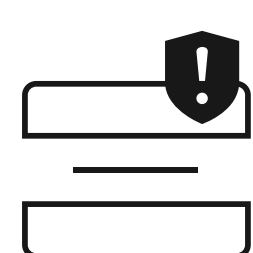
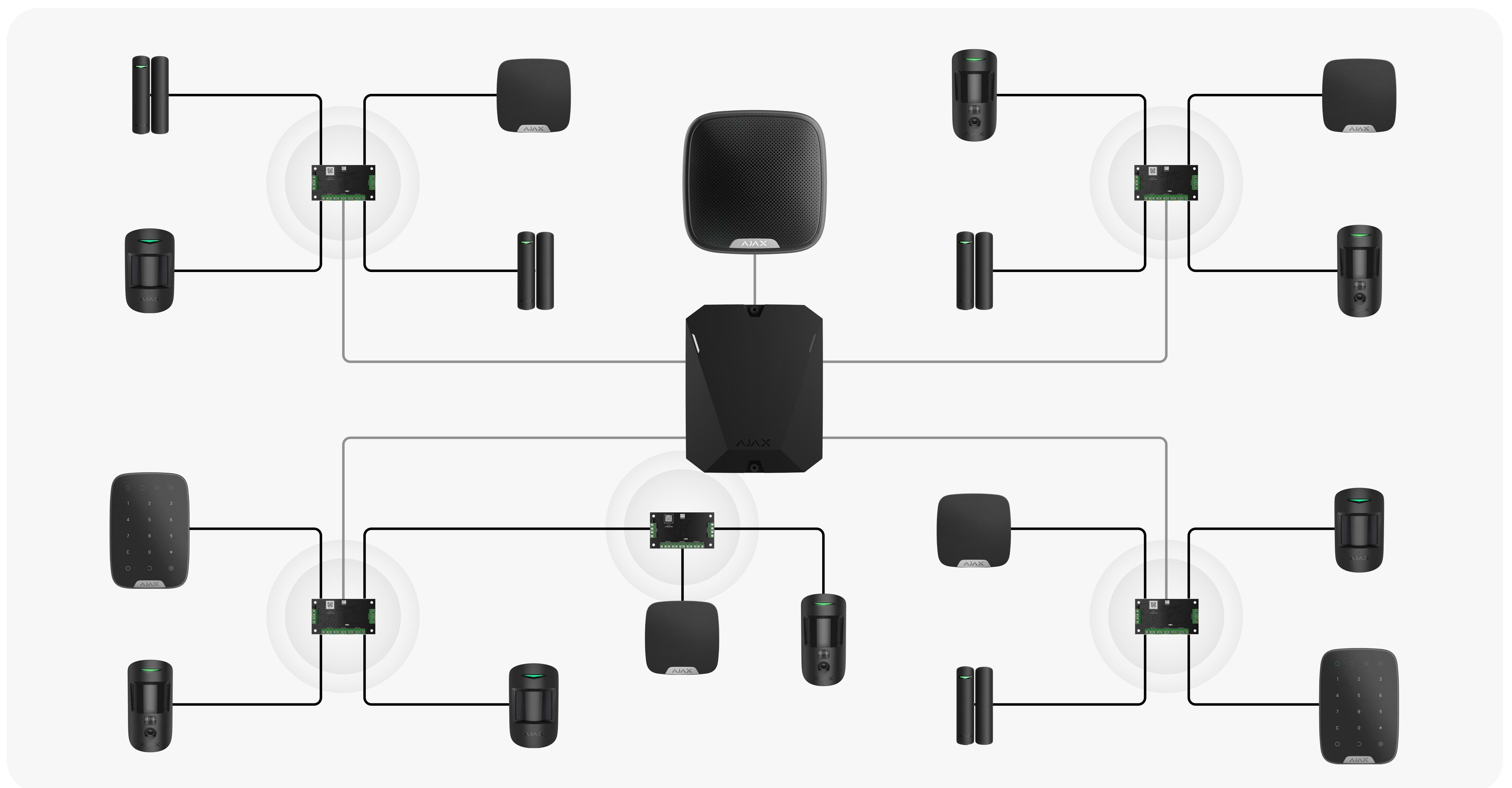


This is a device of the Superior product line. Only accredited Ajax Systems partners can sell, install, and administer Superior products.



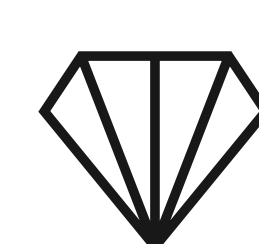
Designed to split the Fibra line

The Superior LineSplit Fibra module splits one line into four ones. Each output line of the module¹ can have a length of up to 2,000 m (6,550 ft) when connected via the U/UTP cat.5 twisted pair cable. The module can be installed at any point² of the line, in particular after another Superior LineSplit Fibra.



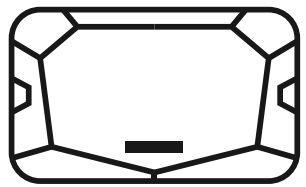
Sabotage protection

- Tamper alarm³
- Protection against spoofing
- Device authentication



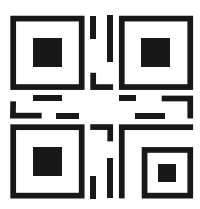
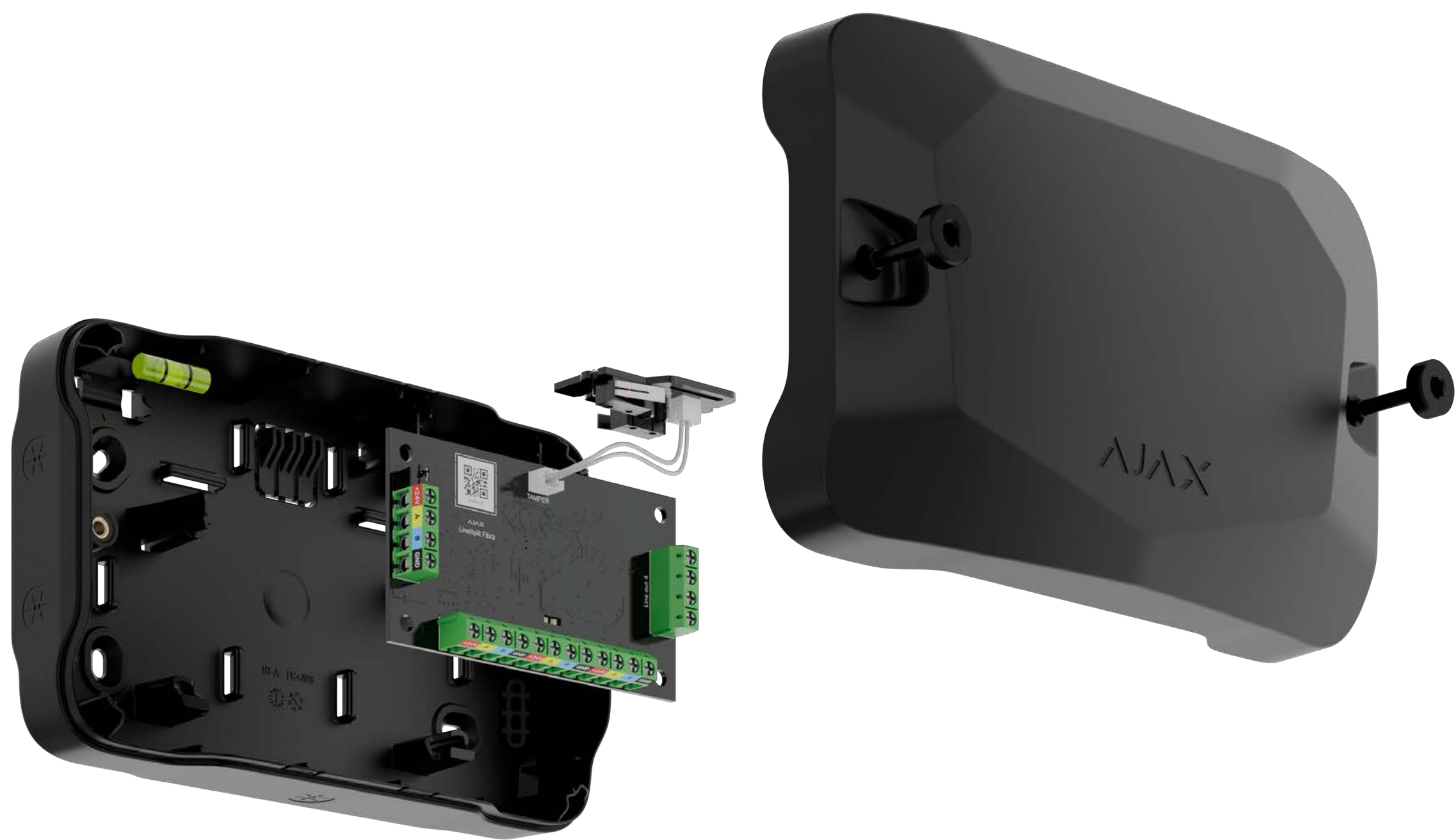
Fibra communication technology

- Wired communication with a hub at a distance of up to 2,000 m (6,550 ft)
- Data encryption
- Regular polling to display current statuses of the devices
- 2,000 m (6,550 ft) of wired connection length for each of the four output lines⁴




Easy-to-mount into Case

- Superior LineSplit Fibra is installed into Case
- Case has an optimal arrangement of wire channels, special holders for the module, and a tamper button
- Several variations with different size of casings



Quick setup

- Pairing with the hub via the line scanning function or QR code
- Remote configuration and testing via mobile and desktop Ajax apps
- Instant maintenance notifications

Compliance with standards EN 50131 (Grade 3) PD 6662:2017 INCERT VSÖ	Compatibility with hubs  For detailed information, scan the QR code or follow the link: ajax.systems/tools/devices-compatibility/?models=LS.Y.F	Communication with a hub Fibra communication technology Wired connection U/UTP cat.5 4×2×0.51 mm (24 AWG) cable, copper conductor 4×0.22 mm² signal cable, copper conductor Communication range up to 2,000 m up to 6,550 ft With a U/UTP cat.5 4×2×0.51 mm (24 AWG) cable	Connection to a Fibra line Number of output lines 4 Number of input lines 1
Power supply 6–30 V $\overline{=}$, up to 25 mW The hub supplies the module	Installation Operating temperature range from –10°C to +40°C from 14 °F to 104 °F Operating humidity up to 75%	Module Dimensions 90 × 50 × 15 mm 3.54" × 1.97" × 0.59" Weight 12 g 0.42 oz	Complete set Superior LineSplit Fibra Quick start guide Case is not included in the complete set. Case is sold separately from the Superior LineSplit Fibra module.

¹ Superior LineSplit Fibra does not provide additional power supply to the line.

² Up to 10 Superior LineSplit Fibra modules can be installed one after the other, connecting each module to the output line of the previous one.

³ Notification of attempts to break or open Case. Case is sold separately.

⁴ When using a U/UTP cat.5, 4×2×0.51 (24 AWG) cable.



For detailed information, scan the QR code or follow the link:
ajax.systems/support/devices/superior-linesplit-fibra/